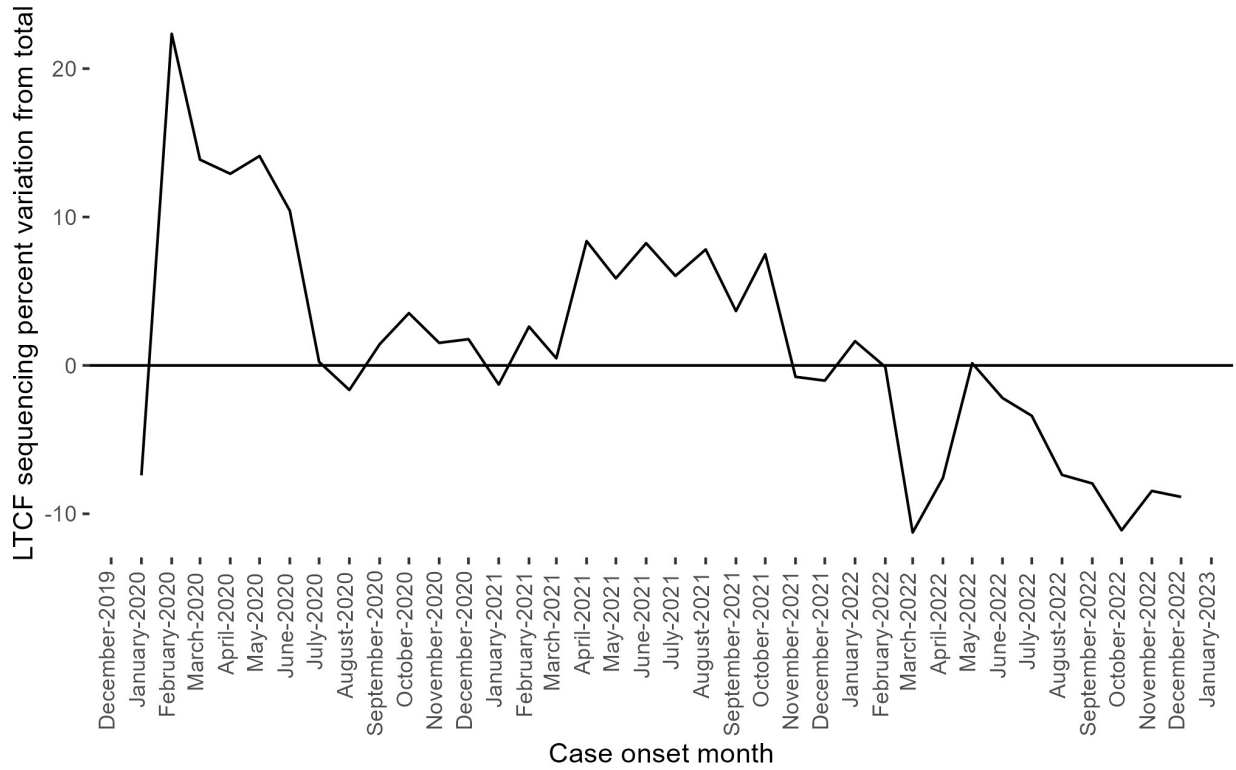
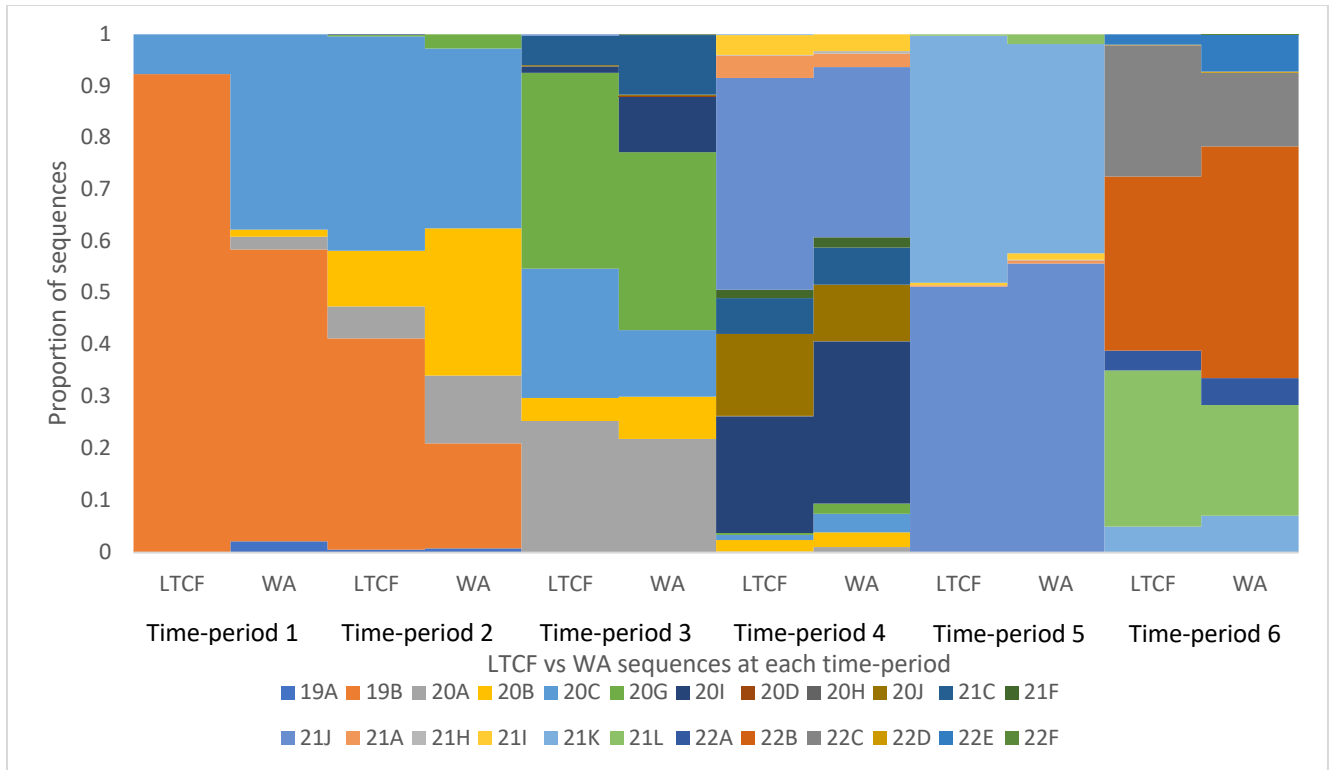


- 1 **Supplemental Figure 1:** Difference in percent of LTCF sequencing from percent of total case
- 2 sequencing by month.



- 3
- 4 **Supplemental Figure 2:** Proportion of Nextstrain clades among LTCF-associated vs non-LTCF
- 5 Washington sequences, by time-period.



6

7 **Supplemental Table 1:** Percent of introduction events leading to large clades, average
 8 introduction events per-day, and sampling proportion and intensity during each time-period.

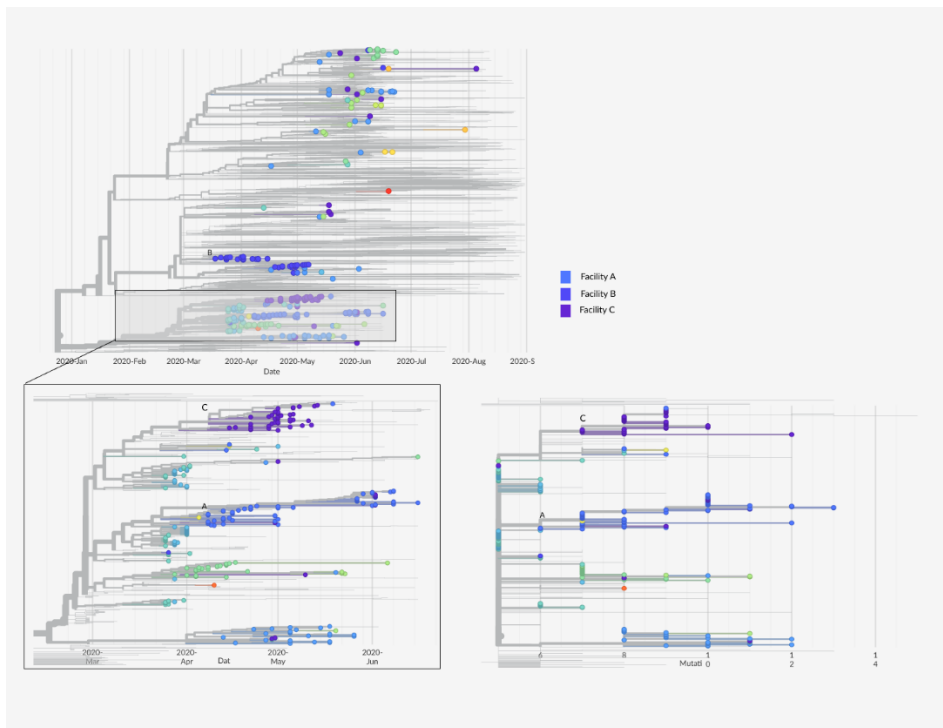
Time-period	Percent of introduction events leading to clades >5	Percent of introduction events leading to clades >10	Average introductions per day	LTCF sampling deviation from community sampling (percentage points)	Percent of all LTCF cases sequenced
1	5%	1%	1.1	+9.6	30%
2	13%	9%	1.0	+8.3	18%
3	6%	4%	0.7	+1.0	5%
4	8%	3%	1.6	+6.1	23%
5	9%	4%	1.5	+0.9	11%
6	8%	2%	1.1	-6.8	5%

9

10 **Supplemental Figure 3:** Time-scaled phylogenetic tree and divergence scaled phylogenetic tree
 11 of sequence data from LTCF-associated cases, Yakima County, January-August 2020 (A), and
 12 time-scaled phylogenetic tree from LTCF-associated cases, Yakima County, August 2021-
 13 December 2022 (C). Nodes are colored by individual facility; colored nodes are LTCF-
 14 associated cases, grey nodes are contextual samples.

15 A. January-August, 2020. Divergence tree displays an alternate view of the figure inset.

16



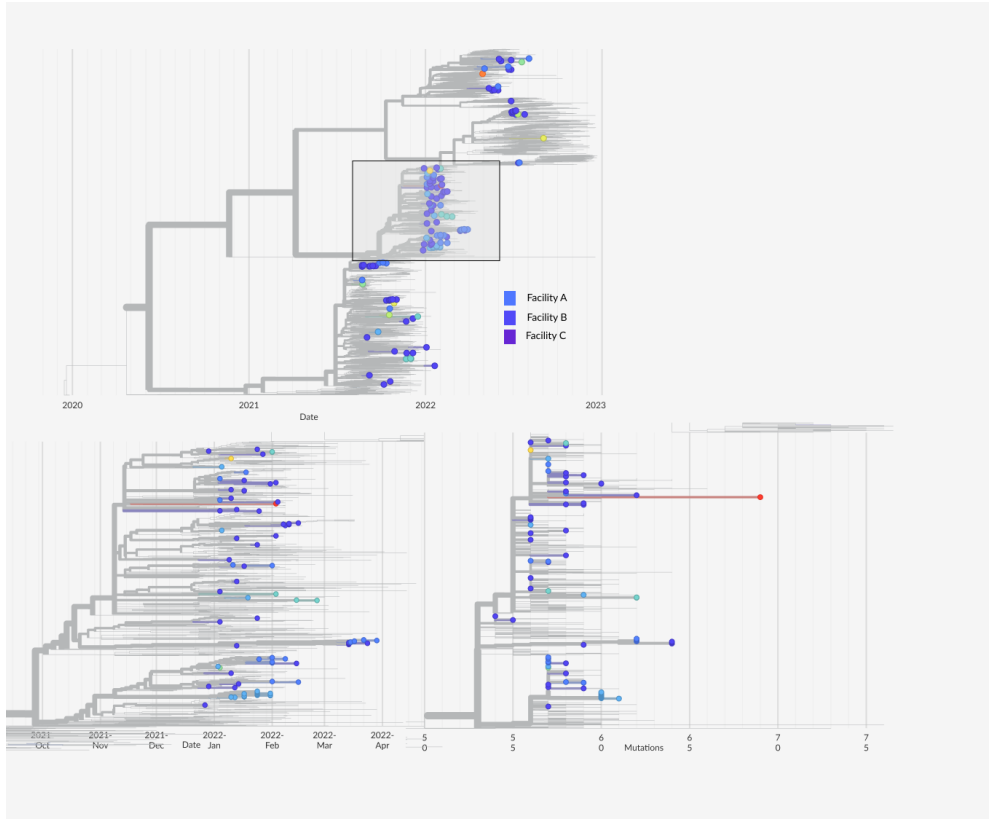
17

18

19 B. August 2021-December 2022

20

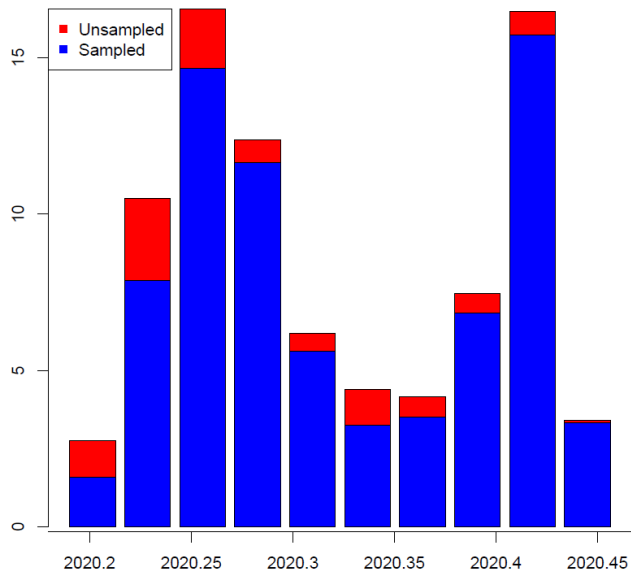
21



22
23
24
25
26

Supplemental Figure 4: Inferred sampling proportions

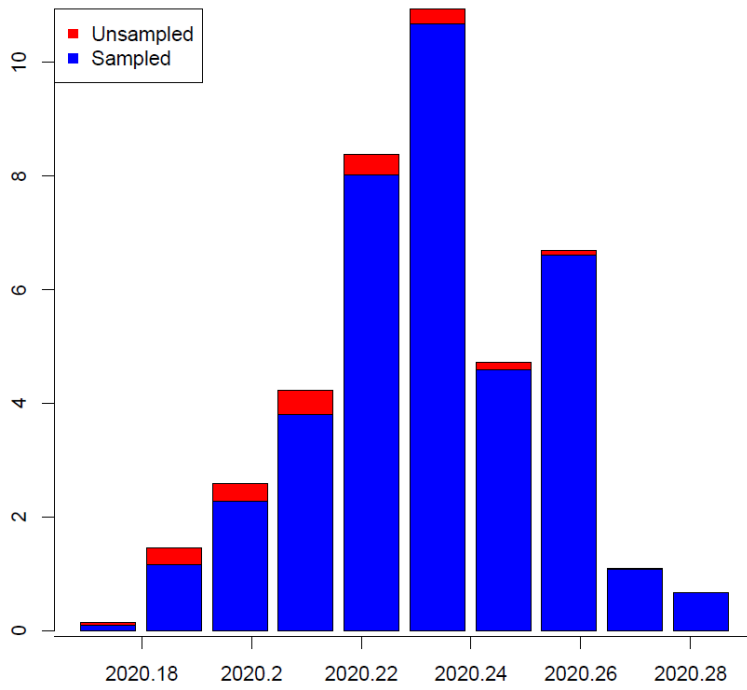
A. Facility A



27
28

29

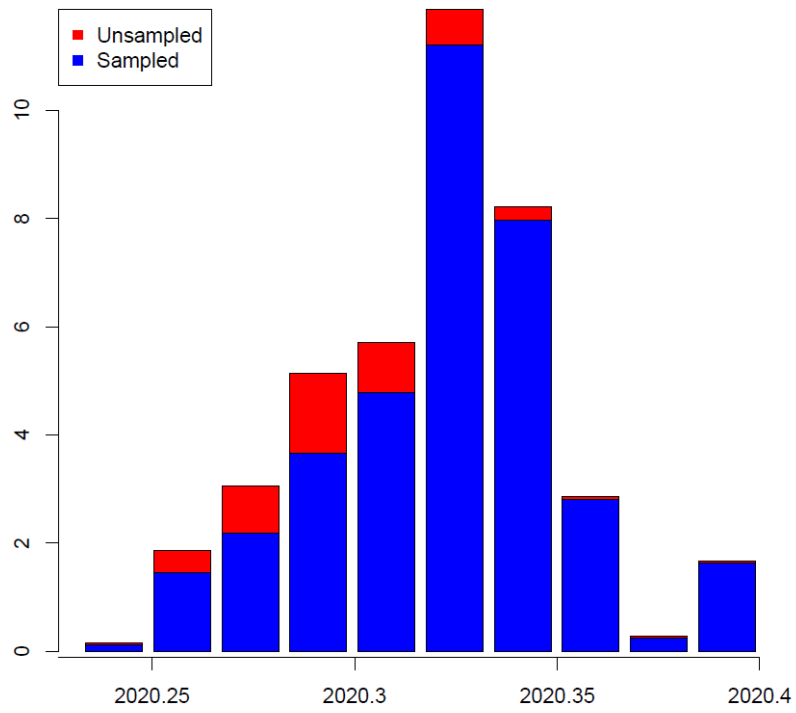
B. Facility B – Outbreak 1



30

31

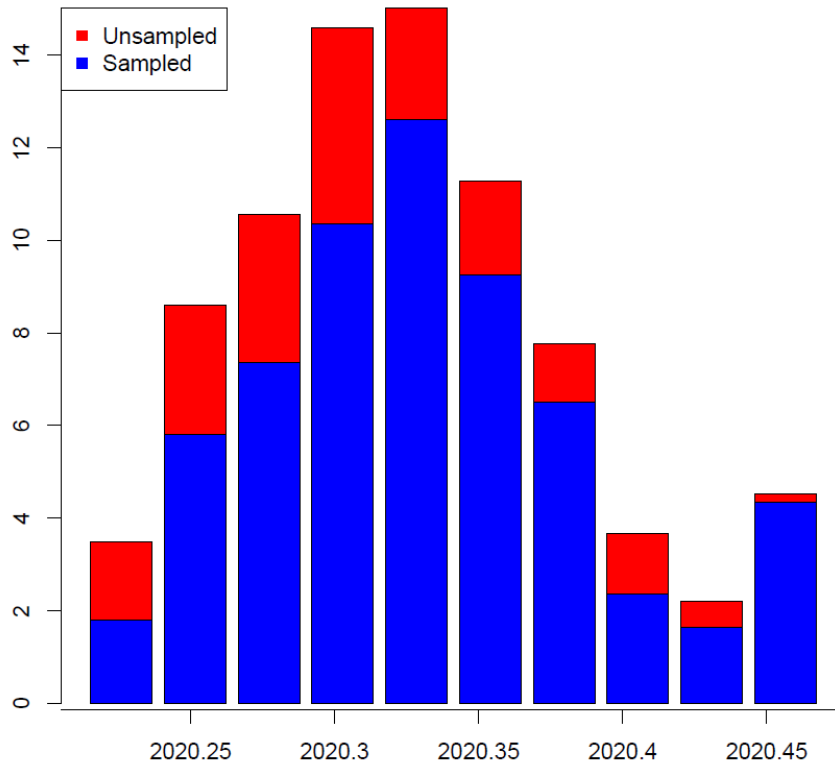
C. Facility B – Outbreak 2



32

33

D. Facility C



34

35 **Supplemental Table 2:** Sampling and estimated staff contribution to analyzed outbreak, Yakima

Facility/Outbreak	Sequencing proportion during period of interest	Transphylo inferred sampling	Proportion of staff among cases	Observed/Expected transmission events attributed to staff
A	56%	88%	0.18	0.94
B-1	58%	95%	0.17	1.17
B-2	58%	95%	0.21	0.90
C	69%	79%	0.22	0.66

36